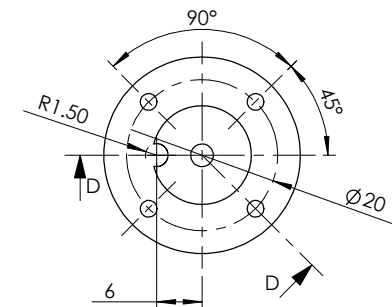
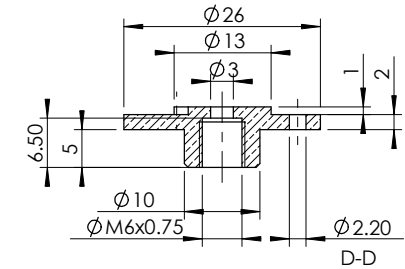
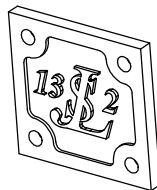
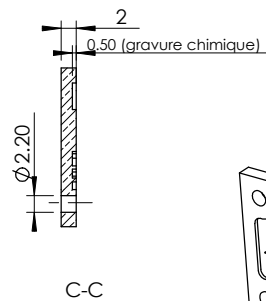
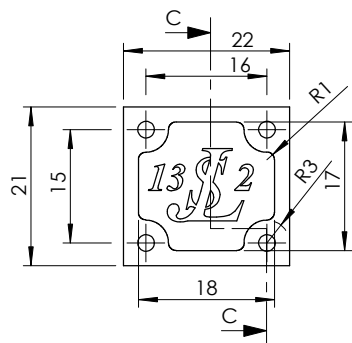


Culasse Supérieure (Rep 19)

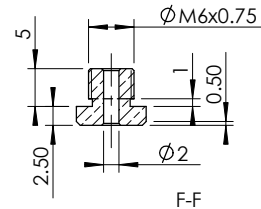
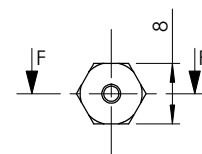


Culasse Inférieure (Rep 3)

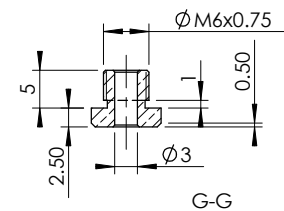
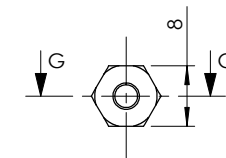
Boite à vapeur (Rep 13)



Couvercle gravé (Rep 14)

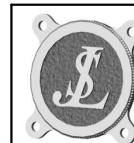


Presse étoupe Ø2 (Rep 42)



Presse étoupe Ø3 (Rep 41)

Cette distance représente 100mm



Moteur à vapeur bicylindre modèle JLS 13-2

**BOITE A VAPEUR
CULASSES**

© JL Soumard - Commercialisation interdite.

Echelle 1/1

Octobre 2000

MV-004